



MASTER PL-T Xtra 4 Pin

MASTER PL-T Xtra 32W/840/4P 1CT/5X10BOX

MASTER PL-T Xtra is an efficient compact fluorescent lamp, typically used in general downlights for retail, hospitality and office applications demanding higher lighting levels. MASTER PL-T Xtra lamps furthermore provide significantly lower operating costs thanks to their lifetime, which is more than double that of a standard MASTER PL-T lamp, and their very low early failure rate. The original Philips-invented bridge technology guarantees optimum performance in the application, enabling more light and higher efficacy than the bended technology. The 4-pin version is designed for operation on electronic gear and is provided with a plug-in/pull-out lamp base.

Product data

General Information		Operating and Electrical	
Cap-Base	GX24Q-3 [GX24q-3]	Luminous Efficacy (rated) (Nom)	75 lm/W
Life to 50% Failures Preheat (Nom)	33000 h	Color Rendering Index (Nom)	82
LSF Preheat 2000 h Rated	99 %	LLMF 2000 h Rated	92 %
LSF Preheat 4000 h Rated	98 %	LLMF 4000 h Rated	88 %
LSF Preheat 6000 h Rated	97 %	LLMF 6000 h Rated	86 %
LSF Preheat 8000 h Rated	96 %	LLMF 8000 h Rated	84 %
LSF Preheat 16000 h Rated	94 %	LLMF 12000 h Rated	81 %
LSF Preheat 20000 h Rated	90 %	LLMF 16000 h Rated	79 %
		LLMF 20000 h Rated	78 %
Light Technical			
Color Code	840 [CCT of 4000K]	Power (Nom)	32.0 W
Luminous Flux (Nom)	2300 lm	Lamp Current (Nom)	0.320 A
Luminous Flux (Rated) (Nom)	2400 lm		
Color Designation	Cool White (CW)		
Correlated Color Temperature (Nom)	4000 K		

MASTER PL-T Xtra 4 Pin

Temperature

Design Temperature (Nom) 28 °C

Controls and Dimming

Dimmable Yes

Mechanical and Housing

Cap-Base Information 4 Pins

Approval and Application

Energy Efficiency Label (EEL) A

Mercury (Hg) Content (Nom) 3.0 mg

Energy Consumption kWh/1000 h 35 kWh

Product Data

Full product code	871150089743570
Order product name	MASTER PL-T Xtra 32W/840/4P 1CT/5X10BOX
EAN/UPC - Product	8711500897435
Order code	927912584014
Numerator - Quantity Per Pack	1
Numerator - Packs per outer box	50
Material Nr. (12NC)	927912584014
Net Weight (Piece)	70.000 g
ILCOS Code	FSMH-32/40/1B-L/P-GX24q=3

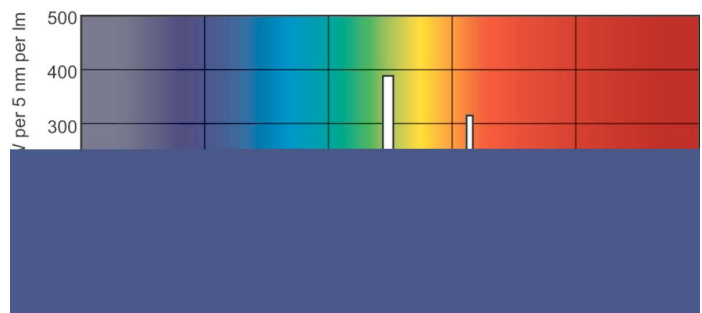
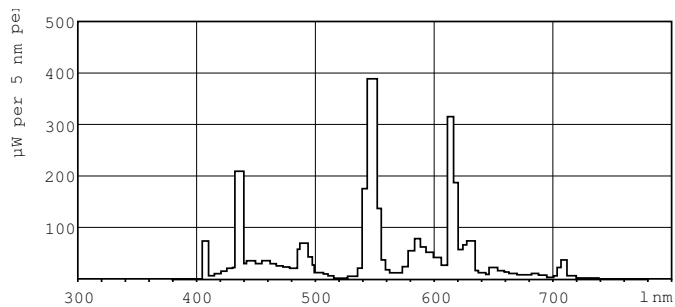
Warnings and Safety

Dimensional drawing

Product	D (max)	A (max)	B (max)	C (max)
MASTER PL-T Xtra 32W/840/4P 1CT/ 5X10BOX	41.0 mm	98.7 mm	123.0 mm	138.7 mm

PL-T Xtra 32W/840/4P M

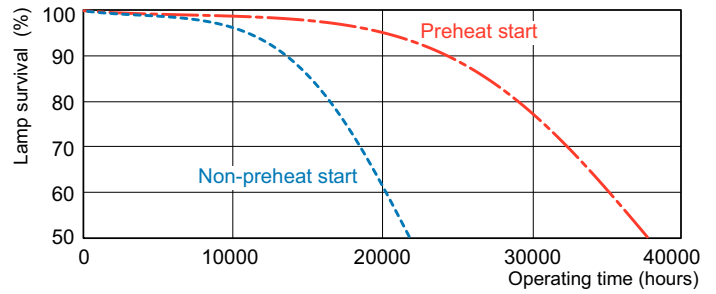
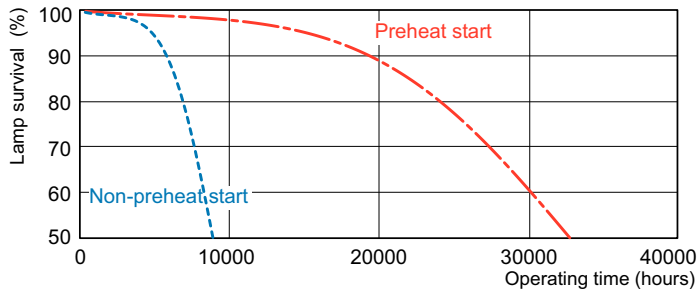
Photometric data



LDPB_PLT4PLTG_840-Spectral power distribution B/W

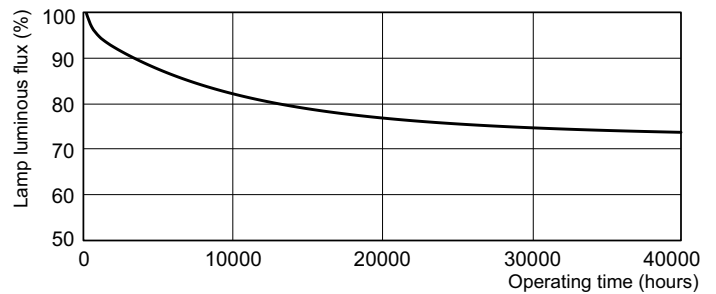
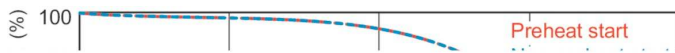
MASTER PL-T Xtra 4 Pin

Lifetime



LDLE_PLT4PLTG_0001-Life expectancy diagram

LDLE_PLT4PLTG_0002-Life expectancy diagram



LDLM_PLT4PLTG_0001-Lumen maintenance diagram

